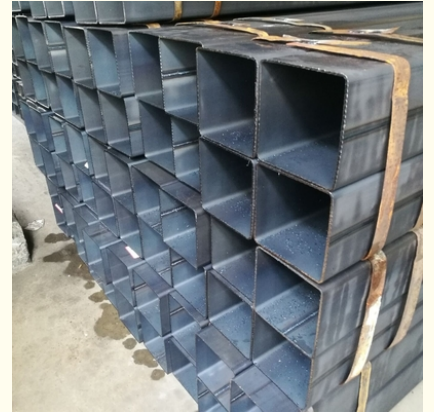


## ASTM A500 Q195 Q215 Rectangle ERW Steel Structural Tube Seamless For Building Cold - Formed

### Our Product Introduction

#### Basic Information

- Place of Origin: Jiangsu China (Mainland)
- Brand Name: Wuxi Sylaithe
- Certification: SGS ISO ROHS
- Model Number: ASTM A500 Q195 Q215
- Minimum Order Quantity: 1MT
- Price: Negotiable
- Packaging Details: standard waterproof package
- Delivery Time: 7-10 Days
- Payment Terms: 30%T/T in advance
- Supply Ability: 8000MT/Month



#### Product Specification

- Section Shape: Square|Rectangle
- Standard: ASTM A500
- Surface Treatment: Galvanized
- Technique: Cold Drawn|ERW
- Material: Q195 Q215
- Type: Welded Steel Pipe
- Highlight: erw steel tubing, weld steel tube



## Product Description

### ASTM A500 Q195 Q215 Rectangle ERW Steel Structural Tube Seamless For Building Cold - Formed

#### Product Description:

ERW Steel Tube Belongs to the pressure welding, the weld edge is heated to the welding temperature pressure welding synthetic pipe welding pipe. It is divided into low frequency and high frequency.

ASTM A500 Round Pipe and Rectangular Hollow Section			
Specification	Outside Diameter	Round Pipe	21.3-406.4mm
		Square Pipe	20*20-400*400mm
		Rectangular Pipe	20*40-400*800mm
	Wall Thickness	1-18mm	
	Length	5.8-11.8m	
Standard	BS, GB, ASTM, DIN EN		
Material	Round Pipe	Q195, Q215, Q235B, Q345B,etc	
	Square and Rectangular Pipe	Q195, Q215, Q235B, Q345B,etc	
Surface Treatment	Bared Anti-corrosion or Heat Preservation Oiled or Painting Galvanized		
End Treatment:	Round Pipe	Plain / beveled / threaded with sockets / coupling and plastic caps / flange	
	Square and Rectangular Pipe	Square cut	
Inspection	Certification	SGS / BV	
	Inspection	Hydraulic test, infrared test	
Technique	ERW or Cold Drawn		
Package	Bundled with steel strips, water-proof cloth		
Application	Round Pipe	Fluid transfer, scaffolding, machinery, building, bridging etc.	
	Square and Rectangular Pipe	Construction, foundation, steel structure etc.	
Notice	Special design is available according to your requirement.		

#### Detailed Photo:



#### Factory Pictures:



**Pipe & Tube Processing:**



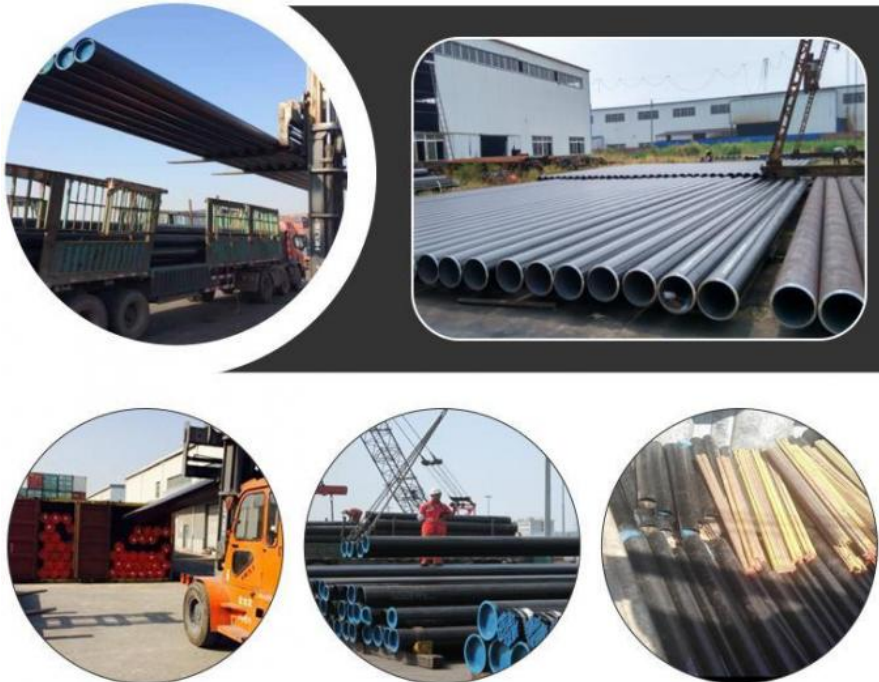
**Steel Pipe & Tube Application:**



## Product Usage used in many industries



### Packaging and Shipping:





#### Certificates:



#### Company Profile:

WX SYLAITH SPECIALSTEEL CO., LTD is located in Wuxi, the largest steel distribution center in east China. Our company has been committed to providing customers with high-quality steel materials and has become the leading supplier of comprehensive material solutions in China. Our company has 20,000 square meters of indoor storage, more than 20,000 tons of spot inventory. Spot product standard involves European standard, American standard, British standard, Australian standard, German standard, Russian standard and so on.

#### FAQ:

##### Q1: ARE YOU FACTORY OR TRADER?

A1: Wuxi Sylait Special Steel Co., Ltd is a manufacturer of steel pipe and tube since 2010. We've gained our Export Right and become an integrated company of industry and trade in order to satisfy buyer's multi-request on different material and products.

##### Q2: WHICH MATERIAL/PRODUCTS YOU CAN PROVIDE?

A2: Seamless Stainless Steel Pipe / Tube, Seamless Carbon Stainless Steel Pipe / Tube, Galvanized Steel Tube with any Shape and Welded pipes can also be available.

##### Q3: HOW TO GET A SAMPLE?

A3: FREE samples are available for your checking and testing. And to get free samples, you need to send us your detailed receiving address (including post code) and your DHL/FedEx/UPS account for collecting samples, courier cost will be paid in your side.

##### Q4: CAN YOU PRODUCE THE PRODUCTS ACCORDING TO MY OWN DRAWINGS?

A4: Yes, we can produce the products according to your drawings that will be most satisfy you.

##### Q5: HOW TO VISIT YOUR FACTORY?

A5: Most of the main cities have flights to Shanghai; you can take flight to Shanghai Putong/Hongqiao International Airport. If you come from Hongkong, it will take 2 hours by flight (every day 5 flight around noon time).



**WUXI SYLAITH SPECIAL STEEL CO.,LTD**

☎ 18921107008

✉ sales1@slssteel.com

🌐 seamless-steel-tubes.com

168 Qiangao Road, Liangxi District, Wuxi, China

