

Q345 Hollow Rectangular Steel Tube 3 Mm For Mechanical Parts

Basic Information

- Place of Origin: Jiangsu China (Mainland)
- Brand Name: WUXI SYLAITH
- Certification: SGS ISO ROHS
- Model Number: Q195/Q215/Q235/Q345/10#/20#
- Minimum Order Quantity: 1 MT
- Price: Negotiable
- Packaging Details: Exporting package/wooden box package/Or per customers' requirement
- Delivery Time: 3~10 days
- Payment Terms: 30%T/T in advance or 100% L/C at sight
- Supply Ability: 8000MT/Month



Product Specification

- Thickness: 0.8 - 3 Mm
- Grade: Q195-Q235
- Processing Service: Bending, Welding, Decoiling, Punching, Cutting
- Length: 3-12m
- Technology: ERW Hot Rolled
- Surface: Black, Pre-Galvanized, Hot DIP Galvanized
- Shape: Square Or Rectangular
- Application: Mechanical Parts And Engineering Structures
- Highlight: **Hollow Rectangular Steel Tube, Q345 3mm Rectangular Steel Tube, ERW Hot Rolled Rectangular Steel Tube**



Product Description

Q345 Hollow Rectangular Steel Tube for Mechanical Parts and Engineering Structures

Rectangular tube is a kind of hollow square cross section light thin wall steel tube, also known as steel refrigeration bend section. It is made of Q235 hot rolled or cold rolled strip steel or coil plate as base material by cold bending forming and then by high frequency welding made of square section shape and size of steel. In addition to the thickening of the wall, the corner size and edge flatness of hot rolled extra-thick wall square tube reach or even exceed the level of resistance welding cold forming square tube.

Quick Details			
Standard:	JIS,DIN,ASTM,BS,API,GB	Standard 2	JIS G3463-2006, DIN EN 10208-1-1998, DIN EN 10025, ASTM A53-2007, BS 1387, BS EN10219, API 5CT, API 5L, GB/T9711.1-1997
Grade Group:	A53-A369, 10#-45#, Q195-Q345	Grade	A53(A,B),10#,20#,45#,Q235, Q345, Q195, Q215
Thickness:	0.5mm - 10mm	Section Shape	Square or as to your request
Outer Diameter:	20*20-200*200mm	Place of Origin	China
Application:	Fluid Pipe, Structure/Fluid/Gas Pipe	Technique	ERW
Certification:	ISO	Surface Treatment	Galvanized
Special Pipe	EMT Pipe	Alloy Or Not	Non-alloy
Tolerance	±5%	Type	Welded Steel Pipe
Processing Service	Bending, Welding, Decoiling, Punching, Cutting	Shape	square or as to your request
Trade Terms	FOB,CIF,CFR,EXW,ect	Material Grade	A53(A,B),A106(B,C), 10#,20#,16Mn,Q235, Q345, Q195, St37
Length	3-12m or customized	Certificate	ISO9001-2008/ISO14001-2015/CE
Packing	Standard see-worthy packaging	End	Plain/Threaded/Bevel/Grooved

Product Photo



Process

Manufacturing Process



RAW MATERIAL GI COILS



UNCOILING



COIL FLATTEN



WELDING



FORMING



INSPECTION



PACKING IN BUNDEL



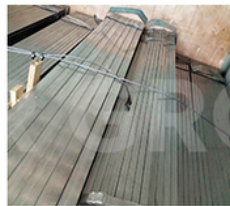
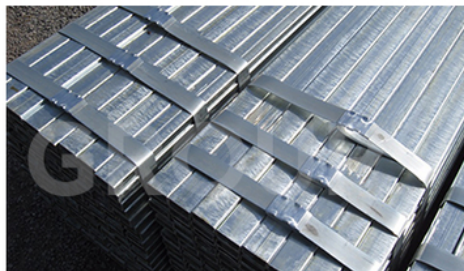
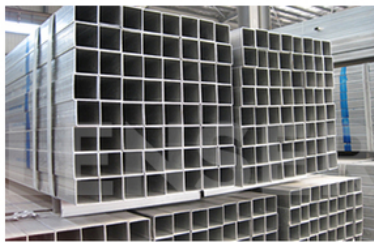
PACKING

Application



Packing & Shipping

Packing & Shipping



Our Factory



Certificates



FAQ

Q1: ARE YOU FACTORY OR TRADER?

A1: Wuxi Sylath Special Steel Co.,Ltd is a manufacturer of steel pipe and tube since 2010. We've gained our Export Right and become an integrated company of industry and trade in order to satisfy buyer's multi-request on different material and products.

Q2: WHICH MATERIAL/PRODUCTS YOU CAN PROVIDE?

A2: Seamless Stainless Steel Pipe / Tube, Seamless Carbon Stainless Steel Pipe /Tube,Galvanized Steel Tube with any Shape and Welded pipes can also be available

Q3: HOW TO GET A SAMPLE?

A3: FREE samples are available for your checking and testing. And to get free samples, you need to send us you detailed receiving address (including post code) and your DHL/FedEx/UPS account for collecting samples, courier cost will be paid in your side.

Q4. CAN YOU PRODUCE THE PRODUCTS ACCORDING TO MY OWN DRAWINGS?

A4: Yes, we can produce the products according to your drawings that will be most satisfy you.

Q5: HOW TO VISIT YOUR FACTORY?

A5: Most of the main cities have flights to Shanghai; you can take flight to Shanghai Putong/Hongqiao International Airport. If you come from Hongkong, it will take 2 hours by flight (every day 5 flight around noon tim



WUXI SYLAITH SPECIAL STEEL CO.,LTD



18921107008



sales1@sissteel.com



seamless-steel-tubes.com

168 Qiangao Road, Liangxi District, Wuxi, China